

1 **London Protocol under water-perfused HRM in a healthy population,**
2 **towards novel 3D manometric parameters in an evaluation of anorectal**
3 **functional disorders.**

4

5

6

7

8

9

10

11

12

13

14

15

16

17

18

19

20

21

22

23

24

25

26

27

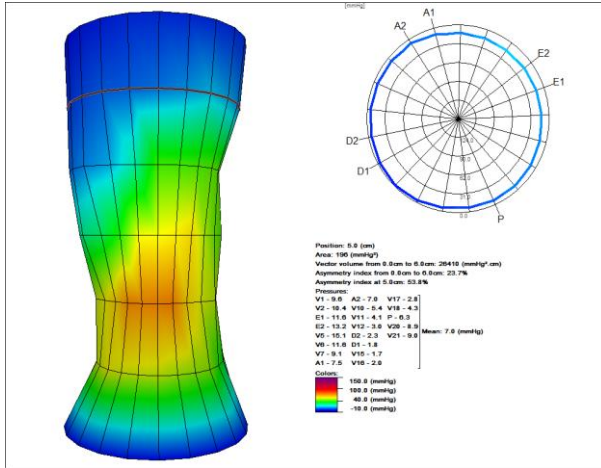
28

Supplementary Materials

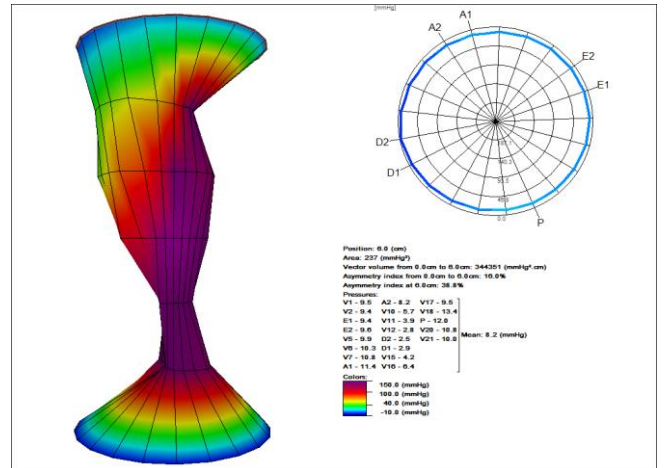
29

a. Supplementary Figures (SF)

31



(a)



(b)

32

33

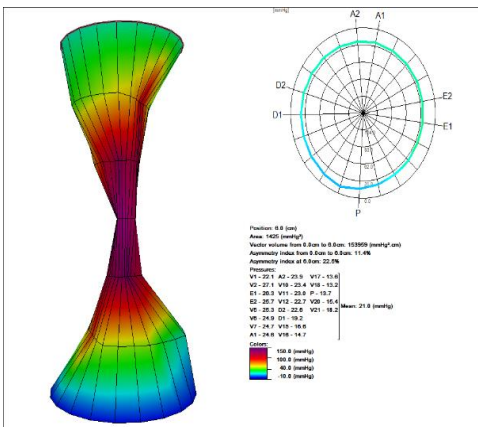
SF 1. Example of resting PV (a) and short squeeze PV (b)

34

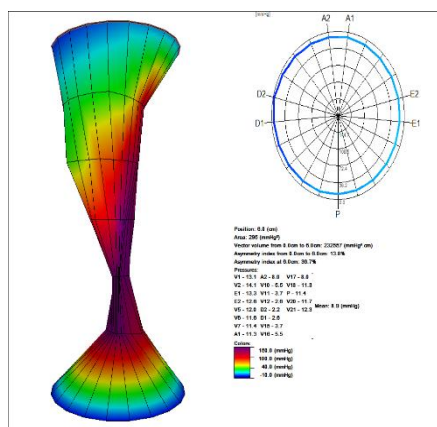
35

36

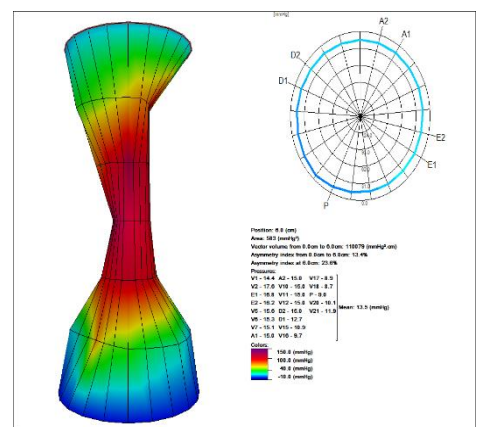
37



38



(b)



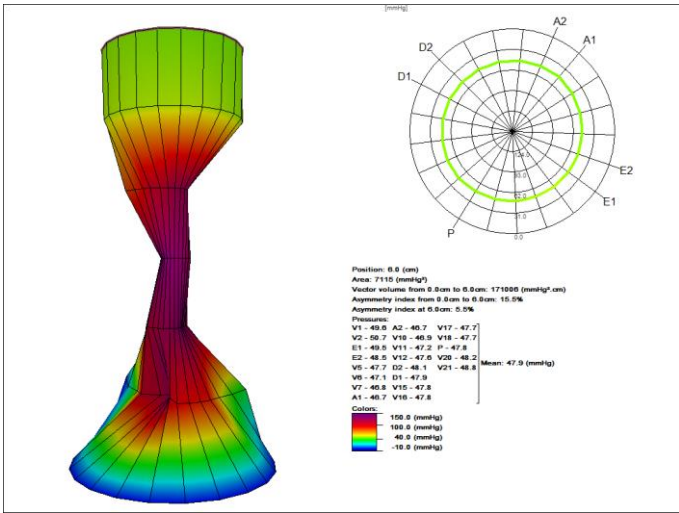
(c)

39

SF 2 Example of long squeeze PV: 1/3 (a), 2/3 (b) and 3/3 (c)

40

41



42

43 SF 3 Example of anal canal PV in cough

44

45

46

47

48

49

50

51

52

53

54

55

56

57

58

59

60 **b. Supplementary Tables (ST)**

61

62 **Table ST1 Resting manometric parameters in 25 healthy females**

Resting manometric parameters (females)	Mean (SD)	Med (IQR)	Min; Max	95% CI	5th; 95th
London Protocol					
Mean maximum pressure (mmHg)	61.1 (16.3)	59.9[51.9;74.0]	[30.5; 95.7]	[54.63;67.62]	[31.90; 77.90]
Complementary parameters					
Mean pressure (mmHg)	38.4 (9.6)	38.9[30.7;46.0]	[22.3;59.1]	[34.55;42.20]	[23.06;51.04]
Functional anal canal length (cm)	3.5 (1.0)	3.6[2.7;4.4]	[1.6;5.2]	[3.10;3.92]	[1.78;4.90]
3D parameters					
Resting PV (10⁴mmHg².cm)	2.4 (1.5)	2.0[1.1;3.3]	[0.6;6.1]	[1.81;2.99]	[0.69;4.38]
Highest pressure asymmetry (%)	26.3(9.8)	23.9[19.3;29.9]	[11.2;51.7]	[22.40;30.20]	[16.44;44.58]
Lowest pressure asymmetry (%)	27.1(13.0)	25.4[19.4;32.4]	[6.6;56.7]	[21.87;32.24]	[9.80;51.30]

63

64 SD (standard deviation); Med (median); IQR (interquartile range); PV (pressure-volume); CI (confidence interval)

65

66

67

68

69

70

71

72

73

74

75

76

77

78

79

80

81

82

83 **Table ST2 Resting manometric parameters in 25 healthy males**

Resting manometric parameters (males)	Mean (SD)	Med (IQR)	Min; Max	95% CI	5th; 95th
London Protocol					
Mean maximum pressure (mmHg)	62.8 (14.7)	60.9[50.7;75.3]	[39.3; 87.2]	[48.1;77.5]	[43.0; 86.44]
Complementary parameters					
Mean pressure (mmHg)	42.1 (9.2)	40.0[35.4;45.1]	[26.9;61.6]	[38.46;45.81]	[30.10;60.24]
Functional anal canal length (cm)	3.9 (0.8)	3.9[3.3;4.6]	[1.9;5.3]	[3.57;4.24]	[2.82;4.98]
3D parameters					
Resting PV (10⁴mmHg².cm)	2.9 (1.6)	2.6[1.7;3.6]	[0.6;6.5]	[2.27;3.58]	[0.97;6.09]
Highest pressure asymmetry (%)	27.3(9.6)	26.8[21.1;32.5]	[8.4;46.4]	[23.48;31.09]	[14.88;43.18]
Lowest pressure asymmetry (%)	23.2(10.0)	22.6[17.5;28.2]	[5.9;50.8]	[19.24;27.20]	[10.14;40.76]

84
85 SD (standard deviation); Med (median); IQR (interquartile range); PV (pressure-volume); CI (confidence interval)

86
87
88
89
90
91
92
93
94
95
96
97
98
99
100
101
102
103
104

Table ST3 Squeeze manometric parameters in 25 healthy females

Squeeze manometric parameters (females)	Mean (SD)	Med (IQR)	Min; Max	95% CI	5th; 95th
London Protocol					
Maximum incremental pressure squeeze (mmHg); short squeeze	108.7 (42.7)	102.5 [83.6;126.2]	[11.6; 208.6]	[91.73; 125.75]	[64.46; 178.80]
Complementary parameters					
Mean pressure (mmHg); short squeeze	117.0 (40.6)	107.8 [99.6;138.0]	[40.8; 204.7]	[100.78; 133.14]	[63.02; 201.26]
Maximum absolute squeeze pressure (mmHg); short squeeze	169.9 (44.0)	168.5 [142.8;183.5]	[71.1; 263.8]	[152.31; 187.42]	[114.90; 246.64]
Fatigue rate (mmHg); long squeeze	-74.9 (46.4)	-69.8 [-91.8; -47.5]	[-201.10; -1.4]	[-93.37; - 56.40]	[-155.78; -10.22]
Fatigue rate index (min); long squeeze	1.6 (2.2)	0.8 [0.6;1.5]	[0.3; 10.5]	[0.70; 2.48]	[0.40; 5.66]
Capacity to sustain (%); long squeeze	71.60 (14.8)	73.4 [61.0;80.0]	[47.1; 98.6]	[65.70; 77.53]	[49.14; 95.80]
3D parameters					
Short squeeze PV (10 ⁴ mmHg ² .cm)	21.0 (13.1)	18.8 [13.5;23.9]	[2.0; 56.4]	[15.80; 26.28]	[6.23; 48.61]
Highest-pressure asymmetry (%); short squeeze	15.8(5.6)	16.0 [10.6;18.1]	[6.2; 27.8]	[13.51; 18.01]	[8.60; 26.16]
Lowest pressure asymmetry (%); short squeeze	18.8(9.2)	17.2 [11.4;23.3]	[7.3; 42.9]	[15.10; 22.41]	[7.98; 33.22]
Long squeeze PV (1/3) 10 ⁴ mmHg ² .cm	11.8 (7.9)	9.9 [7.7;13.7]	[1.0; 33.7]	[8.65; 14.97]	[3.17; 27.92]
Long squeeze (2/3) 10 ⁴ mmHg ² .cm	9.9 (7.2)	7.7 [4.4;13.1]	[0.7; 30.8]	[6.97; 12.73]	[2.58; 22.73]
Long squeeze PV (3/3) 10 ⁴ mmHg ² .cm	11.8 (18.5)	7.2 [4.0;11.3]	[0.9; 96.7]	[4.41; 19.19]	[1.83; 21.92]

106

107

SD (standard deviation); Med (median); IQR (interquartile range); PV (pressure-volume); CI (confidence interval)

108

109

110

111

112

113

114

115

116

117

Table ST4 Squeeze manometric parameters in 25 healthy males

Squeeze manometric parameters (females)	Mean (SD)	Med (IQR)	Min; Max	95% CI	5th; 95th
London Protocol					
Maximum incremental pressure squeeze (mmHg); short squeeze	143 (50.5)	146.3 [114.0;168.8]	[41.9; 262.0]	[122.84; 163.09]	[64.72; 216.18]
Complementary parameters					
Mean pressure (mmHg); short squeeze	155.1 (39.4)	157.2 [131.6;177.6]	[87.3; 256.9]	[139.40; 170.84]	[95.28; 201.82]
Maximum absolute squeeze pressure (mmHg); short squeeze	205.7 (45.2)	211.6 [180.0;239.6]	[123.4; 301.3]	[187.72; 223.74]	[128.86; 269.30]
Fatigue rate (mmHg); long squeeze	-60.5 (77.5)	-71.3 [-95.4; -13.8]	[-267.9; 132.8]	[-91.41; -29.59]	[-137.88; 83.82]
Fatigue rate index (min); long squeeze	2.0 (4.2)	1.0 [0.7;1.5]	[0.4; 20.5]	[0.35; 3.68]	[0.41; 2.87]
Capacity to sustain (%); long squeeze	79.80 (22.1)	74.2 [66.9;93.6]	[38.4; 141.3]	[70.97; 88.58]	[51.78; 120.46]
3D parameters					
Short squeeze PV (10 ⁴ mmHg ² .cm)	36.2 (16.4)	30.9 [26.0;49.9]	[9.5; 66.6]	[29.68; 42.74]	[13.54; 63.72]
Highest-pressure asymmetry (%); short squeeze	14.1(4.9)	13.5 [10.4;17.2]	[6.6; 25.4]	[12.13; 16.06]	[7.72; 22.24]
Lowest pressure asymmetry (%); short squeeze	12.9(4.5)	12.6 [9.7;15.1]	[5.4; 24.5]	[11.15; 14.71]	[6.56; 21.06]
Long squeeze PV (1/3) 10 ⁴ mmHg ² .cm	19.0 (10.5)	15.4 [12.3;24.8]	[6.0; 43.6]	[14.85; 23.21]	[6.40; 37.66]
Long squeeze PV (2/3) 10 ⁴ mmHg ² .cm	16.4 (10.5)	12.2 [9.1;24.7]	[4.8; 44.0]	[12.22; 20.61]	[5.62; 36.69]
Long squeeze PV (3/3) 10 ⁴ mmHg ² .cm	15.1 (10.7)	11.0 [9.1;20.5]	[4.3; 43.9]	[10.85; 19.36]	[5.13; 38.63]

119

120

SD (standard deviation); Med (median); IQR (interquartile range); PV (pressure-volume); CI (confidence interval)

121

122

123

124

125

126

127

128

129

130

131

132 **Table ST5 Cough manometric parameters in 25 healthy females**

Cough manometric parameters (females)	Mean (SD)	Med (IQR)	Min; Max	95% CI	5th; 95th
London Protocol					
Maximum pressure anal canal (mmHg)	132 (31.6)	134.6 [127.6;155.0]	[62.3; 182.6	[120.60; 145.83]	[79.42; 173.82]
Maximum pressure rectum (mmHg)	65.5 (23.8)	65.0 [47.0;79.3]	[24.1; 117.1]	[56.06; 75.02]	[34.74; 109.42]
Complementary parameters					
Anorectal gradient pressure (mmHg)	67.7 (22.1)	62.6 [48.6;83.9]	[31.4; 103.3]	[58.84; 76.46]	[37.56; 100.22]
3D parameters					
Anal canal PV in cough (10⁴mmHg².cm)	11.0 (4.8)	10.6 [8.3;14.0]	[3.6; 21.0]	[9.08; 12.94]	[3.77; 18.65]
Highest pressure asymmetry (%); anal canal	14.4(5.9)	13.9 [10.0;16.9]	[5.1; 26.7]	[12.00; 16.71]	[6.58; 26.0]
Lowest pressure asymmetry (%); anal canal	14.7(4.9)	14.9 [12.6;18.1]	[6.3; 24.7]	[12.79; 16.66]	[6.54; 21.94]

133 SD (standard deviation); Med (median); IQR (interquartile range); PV (pressure-volume); CI (confidence interval)

134

135

136

137

138

139

140

141

142

143

144

145

146

147

148

149

150

151

152

153 **Table ST6 Cough manometric parameters in 25 healthy males**

Cough manometric parameters (males)	Mean (SD)	Med (IQR)	Min; Max	95% CI	5th; 95th
London Protocol					
Maximum pressure anal canal (mmHg)	150.7 (28.8)	150.2 [124.9;171.6]	[95.9; 199.4]	[139.20; 162.21]	[106.66; 195.96]
Maximum pressure rectum (mmHg)	87.0 (27.3)	82.2 [72.5;95.5]	[43.9; 172.5]	[76.07; 97.85]	[53.20; 132.22]
Complementary parameters					
Anorectal gradient pressure (mmHg)	63.7 (26.8)	63.1 [55.7;71.9]	[5.6;138.1]	[53.05; 74.43]	[25.94; 106.94]
3D parameters					
Anal canal PV in cough (10⁴mmHg².cm)	15.1 (5.2)	15.3 [11.6;18.2]	[6.4;26.7]	[13.03; 17.16]	[7.41; 22.71]
Highest pressure asymmetry (%); anal canal	16.0(6.7)	14.9 [10.8;20.3]	[7.6;33.2]	[13.31; 18.66]	[7.80; 27.28]
Lowest pressure asymmetry (%); anal canal	12.5(4.0)	11.7 [8.9;15.0]	[7.0;21.2]	[10.89; 14.12]	[7.68; 19.40]

154

155 SD (standard deviation); Med (median); IQR (interquartile range); PV (pressure-volume); CI (confidence interval)

156

157

158

159

160

161

162

163

164

165

166

167

168

169

170

171

172

173

174 **Table ST7 Push manometric parameters in 25 healthy females**

Push manometric parameters (females)	Mean (SD)	Med (IQR)	Min; Max	95% CI	5th; 95th
London Protocol					
Maximum pressure anal canal (mmHg)	47.4 (19.0)	43.9 [35.7;53.9]	[14.2; 87.2]	[39.87; 54.98]	[25.88; 84.22]
Maximum pressure rectum (mmHg)	27.9 (20.5)	23.9 [19.0;33.2]	[6.8;112.5]	[19.77; 36.07]	[9.84; 45.66]
Complementary parameters					
Rectum-anal gradient pressure (mmHg)	-16.1 (22.5)	-17.9 [-24.2; -1.5]	[-66.4; 27.9]	[-25.03; -7.08]	[-55.72; 24.16]
Anal canal relaxation percent (%)	6.4 (36.0)	10.2 [-22.0;36.4]	[-79.7; 70.1]	[-7.94; -20.77]	[-50.24; 50.64]

175

176 SD (standard deviation); Med (median); IQR (interquartile range); PV (pressure-volume); CI (confidence interval)

177

178

179

180

181

182

183

184

185

186

187

188

189

190

191

192

193

194

195

196

197

198

199 **Table ST8 Push manometric parameters in 25 healthy males**

Push manometric parameters (males)	Mean (SD)	Med (IQR)	Min; Max	95% CI	5th; 95th
London Protocol					
Maximum pressure anal canal (mmHg)	61.3 (26.5)	51.3 [46.7;71.1]	[11.3; 128.8]	[50.79; 71.90]	[31.82; 115.08]
Maximum pressure rectum (mmHg)	42.5 (18.5)	34.9 [31.1;54.1]	[20.0;91.5]	[35.12; 49.83]	[24.48; 72.86]
Complementary parameters					
Rectum-anal gradient pressure (mmHg)	-22.9 (13.2)	-20.2 [-31.4; -13.9]	[-55.3; -4.1]	[-28.12; -17.62]	[-40.32; -6.20]
Anal canal relaxation percent (%)	-23.7 (54.1)	-5.7 [-48.8;10.2]	[-157.8; 36.7]	[-45.26; -2.15]	[-145.72; 28.74]

200

201 SD (standard deviation); Med (median); IQR (interquartile range); PV (pressure-volume); CI (confidence interval)

202

203

204

205

206

207

208

209

210

211

212

213

214

215

216

217

218

219

220

221

222

223

224

225 **Table ST9 RAIR manometric parameters (25 females, 25 males and comparison)**

RAIR manometric complementary parameter	Mean (SD)	Med (IQR)	Min; Max	95% CI	5th; 95th	p
Anal canal relaxation (%)						
Female	36.8 (15.8)	33.3 [25.7;44.9]	[10.90;73.0]	[30.48;43,11]	[17.92;68.50]	0.70
Male	38.4 (13.9)	39.4 [29.5;45.4]	[8.2;61.4]	[32.87;43,98]	[32.87;43.98]	

226

227 SD (standard deviation); Med (median); IQR (interquartile range); PV (pressure-volume); CI (confidence interval)

228

229

230

231

232

233

234

235

236

237

238

239

240

241

242

243

244

245

246

247

248

249

250

251

252

253

254 **Table ST10 Rectal sensory thresholds parameters (25 females, 25 males and comparison)**

Rectal sensory thresholds parameters	Mean (SD)	Med (IQR)	Min; Max	95% CI	5th; 95th	p
London Protocol						
First sensation volume (ml)						
Female	22.9 (17.9)	16.0[10.0;32.0]	[6.0;78]	[15.76;30.08]	[8.0;50.0]	0.35
Male	20.70 (20.40)	12.0[6.0;22.0]	[4.0;88]	[12.60;28.84]	[5.20;50.0]	
Desire to defaecate volume (ml)						
Female	38.5 (19.70)	34.0[23.0;48.0]	[14.0;100.0]	[30.62;46.34]	[16.0;68.0]	0.77
Male	39.20 (24.0)	34.0 [20.0;50.0]	[12.0;100.0]	[29.60;48.71]	[12.40; 86.0]	
Maximum tolerated volume(ml)						
Female	141.4 (53.10)	132.0[106.0;164.0]	[70.0;270.0]	[120.24;162.56]	[73.0;243.80]	0.57
Male	133.4 (44.3)	125.0[100.0;140.0]	[84.0;240.0]	[115.75;151.05]	[86.40;226.0]	

255

256 SD (standard deviation); Med (median); IQR (interquartile range); PV (pressure-volume); CI (confidence interval)

257